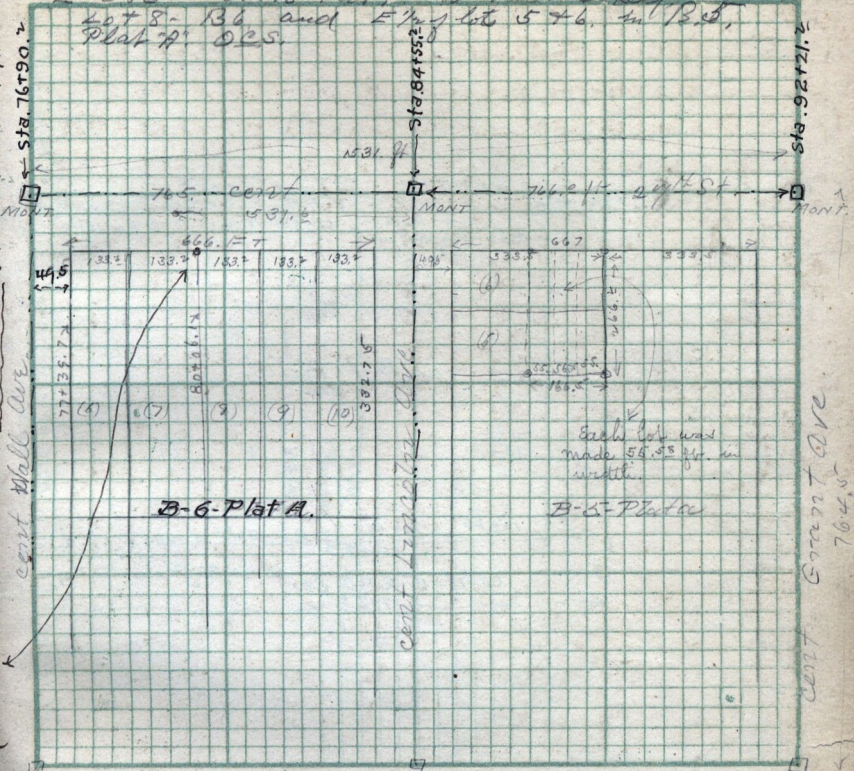


Note: - Jan'y. 30 - 1912 - by decree of Court - (Howell Judge) the E. line of Lot 7-13, B-Plat A, was established 1 ft. East of that shown in this diagram. Case, Dosey - Vs. Jenkins, and at 574, 807, 811

F-383 - Lot 7 from Fanny to Thos Dosey
 67 + 8 - 136 and Fanny lots 5 + 6, in B.S., Plat A, D.S.



See Book 1 page 6 for Jenkins sum Scale:

John Baird & Co McDonald and sons parish.

March 17 - 1891 - Survey for John Jenkins on Block 6 - Plat A
 Ch. S. Prop. 82 1/2 ft N. of N. E. cor Lot 7 in said Block. V. 99. ft
 S 16.5 ft E 99. ft N. 16.5 ft to log.

deed from Thomas Dosey to Myrum Watkins. July 11 - 1888
 V. 355. Pt Lot, 5 + 6 - B-5 - Plat A. Prop. N. E. cor.
 said Lot 6 - thence N 8 1/2 rods S 16 rods E 3 1/2 rods N 16 rods
 to log.

Cent Emmet Ave 764.5